



# 5 Easy Steps

## To Installing Your Newgrove Kitchen Benchtop

Benchtops are easy to install, making them ideal for the home handyman's do-it-yourself project

Custom made for your kitchen and ready for you to install. Your benchtop will be delivered to you in 12-15 days

Following are five easy step for the installation of you NewGrove benchtop.



**Step 1 - Check Installation kit**



**Step 2 - Dry-Fit**



**Step 3 - Cut-Outs**



**Step 4 - Installation**



**Step 5 - Care & Maintenance**



# Installing your Custom Made Benchtop



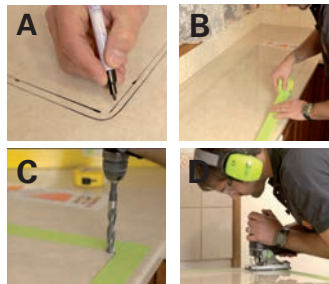
## Step 1 Check Installation kit

Check that you have all the component and tool for your installation - Spanner, Joiner bolts, Glue, 9cm Wood block and L brackets.



## Step 2 Dry-Fit

Position the benchtop over the cabinetry. Check that there are no gaps and that the benchtop fits snug to the wall. If not, your benchtop may need to be planned to fit.



## Step 3 Cut-Outs

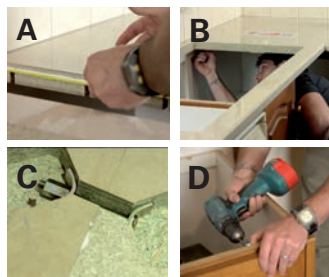
**A.** Using the template provided by the appliance company (see alternative instructions on the DVD supplied) mark the benchtop cut-out\*.

**B.** then place masking tape as a guide & protection.

**C.** Drill a hole for the jigsawing (16mm bit).

**D.** Cut out your sink & hotplate appliance holes.

*\*Check that the sink is clear of any obstructions underneath the cabinets.*



## Step 4 Installation

**A.** Secure your benchtop segment together by running a line of PVA glue\* along the yellow tongue.

**B.** Using the joiner bolts supplied tighten until firm. With the wood block supplied and hammer carefully ensure that the join is flat and level.

**C.** Tighten further if necessary. Clean excess glue with a damp cloth.

**D.** Attach the benchtop to the cabinets with the "L" brackets.\*\*

*\*Allow 10 minutes for the glue to set.*

*\*\*The Installation of your NewGrove benchtop should take approximately 3-4 hours.*



## Step 5 Care & Maintenance

Use a clean damp cloth with a mild detergent or household cleaner. Do not place hot items directly on the laminate surface. Do not use knives or other sharp utensils that may scratch the surface. With a few precautions as mentioned your benchtop will provide lasting service to your home.

